

# Paradise (TENOR)

293

Music by: Cold Play

$\text{♩} = 140$  **3X**

Oooo... dou dou dou...

7 8 9 10 11 12 13 14 **3X**

15 16 17 18 19 20 21

22 23 24 25

When she was just a girl She ex-pec - ted the world But it

26 27 28 29

flew a-way from her reach so she ran a-way in her sleep: dreamed of

30 31 32 33 34

Pa-ra Pa-ra Pa-ra-dise Pa-ra Pa-ra Pa-ra-dise Pa-ra Pa-ra

35 36 37 38 **2X** 39 40

Pa-ra-dise Eve-ry time she closed her eyes doo doo doo doo doo

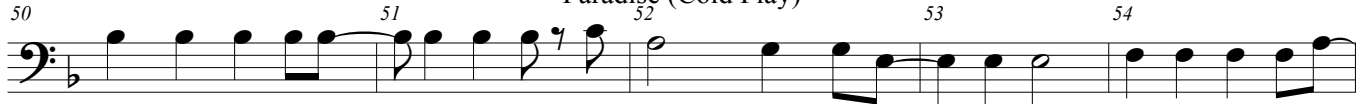
41 42 43 44 45

When she was just a girl She ex-pec - ted the world But it

46 47 48 49

flew a-way from her reach and the bul-lets catch in her teeth

Paradise (Cold Play)



Life goes on it gets \_\_\_ so hea-vy The wheel breaks the but - ter-fly eve-ry tear a wa-



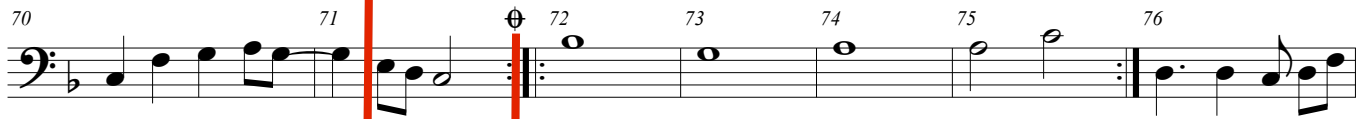
- ter fall in the night the stor-my night \_\_\_ she closed her eyes \_\_\_\_\_ In the



night the stor-my night \_\_\_ A-way she flied \_\_\_\_\_ dreamed of Pa-ra\_\_ Pa-ra\_\_



Pa-ra-dise Pa ra\_\_ Pa-ra\_\_ Pa-ra-dise Pa-ra\_\_ Pa-ra\_\_ Pa-ra-dise



oh \_\_\_\_\_ Oooo... \_\_\_\_\_ la la la... \_\_\_\_\_



She's still ly - ing un-der - neath \_\_\_ those stor-my



skies \_\_\_\_\_ She said oh \_\_\_\_\_ I know the sun must set to rise



\_\_\_ dreamed of doo doo \_\_\_ doo doo doo \_\_\_