

Face à la mer

Akapella 2012

Calog3ro

Basse

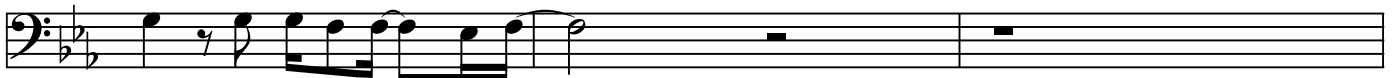
The musical score for the Bass part is written in 4/4 time with a key signature of two flats (B-flat and E-flat). It consists of ten staves of music. The first staff begins with a double bar line and repeat dots. The subsequent staves contain a series of rhythmic patterns, primarily using eighth and sixteenth notes, often with grace notes. The piece concludes with a first ending (marked '1.') and a second ending (marked '2.').

Face à la mer
1/2

toi qui ré - siste
Dimanche 5 février 2012, 22:55:21



face à la terre ton nom sur la liste - de tout ton être —



— ci - té à com - pa - raire

